

# AFTERCARE NOVEMBER NEWSLETTER



**Sharon  
Community  
Education**

This month is full of excitement and happenings. It is the time when students start to get excited about all the holidays. No matter what you celebrate there is an excitement in the air, in the schools that is only matched in the month of June.

We have been busy adding new staff, new supplies, and new clubs to our programs to continue to make it the best experience for your children.

I welcome any feedback, comments, or concerns for our program, staffing or other. If you have any positive feedback for the staff, I love to receive those emails and share with the staff at our monthly meetings, a kind word goes a long way.

Wishing all of our families a happy healthy Thanksgiving season. I think we all can take a step back and look at what we can be thankful for. I hope to continue to see you all at the sites, I enjoy spending more time with the students and staff.

Erin McCabe  
Assistant Director  
[emccabe@sharonschools.net](mailto:emccabe@sharonschools.net)

**FOR MORE INFORMATION:**

visit <https://sharoncommunityeducation.com/>

# WEATHER NEWS

Daylight Savings is November 5th. As it starts to get dark earlier and the temperature begins to drop, please make sure that your child is dressed appropriately for the playground.

We follow the Child Care Weather Watch guidelines that suggest we go outside as long as the temperature feels 20° or higher. Please be sure your child has appropriate winter clothing to be able to play safely outside, especially once the snow comes.

This means:

- a winter coat
- a winter hat-NOT a baseball hat
- winter mittens or gloves
- snow pants
- boots



Please make sure your child's name is on all items. You would be surprised how many pairs of black snow pants we get!

If we go outside and there is snow on the ground and your child doesn't have snow pants or boots, they will still go outside, but will need to stay on the hardtop only. **YOUR CHILD WILL NOT BE ALLOWED TO GO OUTSIDE IF THEY DO NOT HAVE A COAT, HAT AND MITTENS.**

Please see attached charts.

In the case of snow, here are some reminders about school closings. If school is closed after care is closed. If school is delayed, before care is delayed by the same amount of time. A one hour delay in school equals a one hour delay at before school. If school is dismissed early, we are at the discretion of the Superintendent. If Dr. Botelho deems it safe to stay open, we will stay with your child until 4:00PM, if Dr. Botelho asks us to close, we will notify and you immediately of the closure.





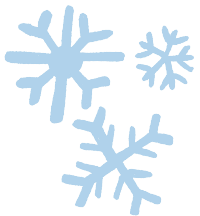
# Inclement Weather & Closing Information

**School Cancellation:** All Communication Education Programs including Before-School Care, After-School Care, are CANCELED on "SNOW DAYS" and for other system-wide emergencies. There will be NO Community Education Programs when school has been canceled. Because some of our Enrichment Programs are held in locations other than school, Enrichment classes may still be held. Check the Community Education website to find out if class is held. Official school cancellation announcements will be communicated via text, email, and/or phone call to the contact information we have on file.



**Delay of School:** In the event of a school opening delay, Before-School Care will also be delayed. If school is delayed an hour, Before-School Care will open at 8:15AM, if there is a 90 minute delay, the program will open at 8:45AM, a two hour delay the program will open at 9:15AM.

**Community Ed. Cancellation:** During the regular school day, if students are dismissed early from their schools due to a storm, impending storm, or other emergency, there will be After-School Care as soon as the students are released to us until 4:00PM, unless the Superintendent determines that for safety reasons we close at an earlier time.



# PROGRAM NEWS

## Review all program policies

If you need to change your child's dismissal routine (e.g. change from taking the bus to getting picked up, dismiss early for an appointment, etc.), you must email/send in a note to the school office, classroom teacher, Community Education. We recognize that much of our world now communicates digitally, and it's tempting and logical that you would like to email your child's teacher. However, we run into issues when either the teacher is out that day and unable to alert the school office, or if the email comes in during class instruction time. The teacher is usually unable to pass along the message to the appropriate parties. Also, the school office does not communicate to our office when your child is out from aftercare or is going home a different way. With all of that in mind, please send in a hard copy dismissal note to the classroom teacher and email school office as well as Bridget Maddalena, [bmaddalena@sharonschools.net](mailto:bmaddalena@sharonschools.net) at Community Education before 2:00PM.

We want to thank you for your patience with the Before and Aftercare waitlist. Please know that we at Community Education are continuing to do our best to be able to accommodate as many children as we safely can into our programs with the amount of staff we have. We will contact families individually via email should space become available. If you need to make any changes to your child's schedule we will need it in writing. All changes can be sent to [bmaddalena@sharonschools.net](mailto:bmaddalena@sharonschools.net)

On the Early Release days, it is important that your child has a lunch from home or it is communicated to them that they are getting a bagged lunch from school. Aftercare does not provide lunches.

**\*Lounge families, it is important that your child reports to aftercare attendance before they attend their school club. If they will not be attending the Lounge after the club you need to call the office to report your child being out. Staff are having to leave their station to track down students whereabouts. Also, once you have signed your child out of the program they may not reenter. There are no temperry dismissals in aftercare. Thank you for your understanding.**

## REMINDERS

**November 9th** – Early Release (ALL)

**November 10th** - Veteran's Day (No School)

November 14th - Early Release (ALL)

November 16th - Early Release (ELEM/ECC) **NO AFTERCARE**

November 22-24 - Thanksgiving Recess

December 14 - Early Release (ALL)





**SAVE  
THE  
DATE**

**No Aftercare**

**Thursday, November 16  
AND  
Thursday, March 21**

**This is a staff training day for all  
aftercare employees.**



# EARLY RELEASE DAYS

Early release coverage is available only to students in the Aftercare Program in Sharon Public Schools that are currently enrolled on the designated early release days listed below from their early dismissal time to 6:00PM. Again, students only attend if it is a day they are currently registered for. If the early release day is a day your child normally attends, but will not be coming, contact Bridget Maddalena, [bmaddalena@sharonschools.net](mailto:bmaddalena@sharonschools.net) or 781-784-1574 no later than 10:00AM that day.

We also encourage you to contact your child's school office and classroom teacher to let them know as well. If someone else is picking up your child make sure they are on your authorized pickup list and have them bring an ID with them.

Each school will have a grab and go bagged lunch that students will be provided with. If your child does not want the school grab and go bagged lunch option your child should bring a lunch from home.

## Early Release Days

Thursday, November 9 (ALL)  
Tuesday, November 14 (ALL)  
Thursday, December 14 (ALL)  
Wednesday, January 10 (ALL)  
Tuesday, March 12 (ALL)  
Tuesday, March 19 (ALL)  
Thursday, May 9 (ALL)

## Early Dismissal Times

Middle 11:10AM  
Heights 12:20PM  
Cottage 12:30PM  
East 12:35PM



# KAYMBU

On October 6 our visual newsletter Kaymbu started. This is a great way to see what the aftercare students are doing. They often contain captions that explain projects and activities. Kaymbu is a visual newsletter that is fun to look at with your children. This becomes a wonderful opportunity for parents to reflect and family members to reflect on all the wonderful activities the students have engaged in while in our program throughout the week.

The staff does try to make sure every child on the approved list is photographed, but their main goal is to document activities for you with pictures. Children who attend every day tend to be in more photos, so please do not be offended if you do not see a lot of pictures of your child. Our staff is busy and does their best!

The Kaymbu app sends one email to each family whose email we have listed in our system. Feel free to forward it to other family members. The individual photos can be downloaded as well for convenience. If for some reason you do not receive the email, check your spam folder and then email [emccabe@sharonschools.net](mailto:emccabe@sharonschools.net) notifying that you did not receive it. This will only get sent out to families who have selected their child to be photographed. If your child is on the **"No Photo" list, your child will not be photographed and you will not receive the weekly emails.**





# TIME TO DONATE



- Assorted and **ALL** types of toiletries are need from soap to Tylenol. Even shampoos like TGIN, Maui, Shea moisture, Camille Rose, As I am, and Mielle to name a few. All can be found at CVS, Target and Walmart.
- First Aid Kits
- Diapers and formula (presently about size 2 diapers and Similac Advanced or Enfamil Formula)
- Warmer Clothes (All sizes Newborn-adult)
- Snack foods (healthy options) and baby foods
- Gift cards are welcome too!



**Donation bins will be located next to the Aftercare Desk at each school.**





# POP TAB WARS

Back by popular demand are the Pop Tab Wars. Beginning Monday, November 6, 2023-Friday, May 24, 2024 all programs will be collecting Pop Tabs to benefit Ronald McDonald House Charities. Students who would like to participate will receive a large zip loc bag to be filled and return back to the program for deposit. There will also be a bin at the sign-out desks to deposit any loose tabs.

Tabs will be collected at the end of each week and weighed. Last year's winners were Heights, who brought in 92.2lbs of tabs, followed by Cottage with 34.6lbs and East with 20.8lbs. Donations will be delivered to the Ronald McDonald House in Providence, RI.

Tab donations help families physically, economically, and emotionally during their health care journey. A Ronald McDonald House program helps reduce stress and financial burden for families when they must travel far from home to access medical care for their child.

Each tab goes a long way!



## Pop Tab Fun Facts:

- It takes 1,280 pop tabs to make one pound.
- RMHC receives approximately 70 cents per pound.
- It would be take about 63,360 pop tabs place end-to-end to reach a mile.



# PICTURES FROM THE PROGRAMS- HALLOWEEN ACTIVITIES

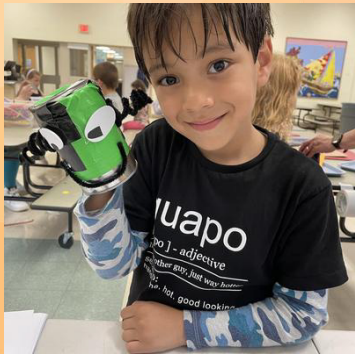


TRICK  
or  
Treat





# PICTURES FROM THE PROGRAMS- HALLOWEEN ACTIVITIES





# PROGRAM PICTURES





# PROGRAM PICTURES





# PROGRAM PICTURES





# ENRICHMENT



**Registration opens  
on Monday,  
November 13 at  
9:00AM**



**Sharon Community Education  
Enrichment Term 2, 2023-2024  
Grades K-5**



[SharonCommunityEducation.com](http://SharonCommunityEducation.com)



**AI Adventures pg. 10**



**Roblox Coding & Gaming  
Design pg. 13**



**Ice Skating pg. 5**





# Looking for Summer Work? We're hiring for our Summer Camps!

**STAR Camp**  
6/24/24 to 8/2/24  
Seeking counselors &  
specialists



**CREATE Camp**  
7/8/24 to 8/2/24  
Seeking staff with  
performance background

**Both camps are held at  
Sharon High School. Scan  
the barcode to apply!**



You can also visit:

[www.sharoncommunityeducation.com/employment-application](http://www.sharoncommunityeducation.com/employment-application)



# Who To Know At the Office & Program



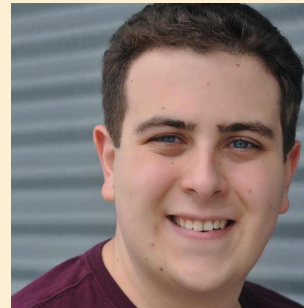
Erin McCabe  
Assistant Director of  
Community Ed. Enrichment  
Coordinator and Director of  
STAR Camp  
emccabe@sharonschools.net  
781-784-1574 x1



Maryanne Auld, RN  
Lead Instructor at East  
781-793-5199



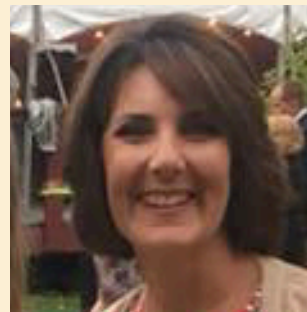
Barbara Coyne  
Office Manager  
bcoyne@sharonschools.net  
781-784-1574 x3



Alex Narcotta  
Lead Instructor at Heights  
781-793-9999



Bridget Maddalena  
Before & Aftercare  
bmaddalena@sharonschools.net  
781-784-1574 x2



Kim Moore  
Lead Instructor at  
Cottage  
781-784-1519



Sara Norton  
Adult Education  
snorton1@sharonschools.net  
781-784-1574 x5



Molly Van Cott  
Lauren Cohen  
Suma Kaveti  
Vanithamnani Rajkumar  
781-793-5074

