


# AFTERCARE DECEMBER NEWSLETTER



With the winter chill upon us, it must be December. We are already into our fourth month of school and there are so many fun activities that have already taken place at after care that it's hard to believe there could be new things in store, but hold onto your hats because there are so many new clubs, crafts, games and activities to be planned for December and the coming months.



**Erin McCabe**  
**Asstistant Director**  
**[emccabe@sharonschools.net](mailto:emccabe@sharonschools.net)**

**FOR MORE INFORMATION:**

visit <https://sharoncommunityeducation.com/>

# PROGRAM NEWS

## Review all program/school policies on page 3

If you need to change your child's dismissal routine (e.g. change from taking the bus to getting picked up, dismiss early for an appointment, etc.), you must email/send in a note to the school office, classroom teacher, Community Education. We recognize that much of our world now communicates digitally, and it's tempting and logical that you would like to email your child's teacher. However, we run into issues when either the teacher is out that day and unable to alert the school office, or if the email comes in during class instruction time. The teacher is usually unable to pass along the message to the appropriate parties. Also, the school office does not communicate to our office when your child is out from aftercare or is going home a different way. With all of that in mind, please send in a hard copy dismissal note to the classroom teacher and email school office as well as Bridget Maddalena, [bmaddalena@sharonschools.net](mailto:bmaddalena@sharonschools.net) at Community Education before 2:00PM.

We want to thank you for your patience with the Before and Aftercare waitlist. Please know that we at Community Education are continuing to do our best to be able to accommodate as many children as we safely can into our programs with the amount of staff we have. We will contact families individually via email should space become available. If you need to make any changes to your child's schedule we will need it in writing. All changes can be sent to [bmaddalena@sharonschools.net](mailto:bmaddalena@sharonschools.net)

On the Early Release days, it is important that your child has a lunch from home or it is communicated to them that they are getting a bagged lunch from school. Aftercare does not provide lunches.

**\*Lounge families, it is important that your child reports to aftercare attendance before they attend their school club. If they will not be attending the Lounge after the club you need to call the office to report your child being out. Staff are having to leave their station to track down students whereabouts. Also, once you have signed your child out of the program they may not reenter. There are no temperry dismissals in aftercare. Thank you for your understanding.**

## REMINDERS

**December 14** - Early Release (ALL)

**December 23-January 1** - Winter Break

**January 10, 2024** - Early Release (ALL)

**January 15** - Martin Luther King Day (NO SCHOOL)

**January 26** - **Registration Opens at 9:00AM for:**

\*Before/Aftercare 24/25

\*STAR Camp

\*CREATE Camp

# School Procedures/Policies

The Sharon Public Schools has a zero-tolerance policy for any behavior that interferes with the rights of others. This may include but is not limited to verbal threats, physical aggression, and any actions that endanger the safety of other students or adults. Such actions will result in a student being subject to suspension. The Assistant Director may issue an emergency suspension when the student's actions and/or threats pose a potential danger to persons or property, and will immediately notify the Superintendent. The Police Department may be notified. Suspension is defined as separating the student both from other students and from regular school activities. The suspension may be implemented in school or out of school. When a student's action warrants a suspension, written notification will be sent to the parents.

## GENERAL RULES

1. Sexual harassment is prohibited by both federal and state statutes and will not be tolerated in the Sharon Public Schools.
2. Be courteous and kind to others. **VERBAL DISRESPECT IS NOT TOLERATED.**
3. Be considerate of the ideas and feelings of others.
4. Respect the rights and property of others.
5. Follow the directions of adults in authority.
6. Dangerous or illegal materials, or weapons are not allowed in school.
7. Appropriate school attire is expected at all times.
8. Clothing displaying offensive pictures, words, or slogans (i.e., promoting alcohol, drugs, etc.) is not allowed. Anyone wearing an inappropriate tee-shirt will be asked to turn it inside out. Clothing should also be both appropriate to the season and not too physically revealing. (For example, spaghetti straps, very short shorts or exposed midriffs are not allowed.)
9. Chewing gum and candy are not allowed.
10. Pushing, shoving, rough play, and fighting is unacceptable at any time.
11. Use of obscene, abusive, or profane language or gestures is unacceptable.
12. Take care of all materials, property, and equipment throughout the school.
13. Refrain from shouting or using loud voices in a school building.
14. **RUDE OR DISRUPTIVE BEHAVIOR AT ANY TIME IS NOT ALLOWED.**
15. Have your best manners ready at all times for visitors, guests, staff and presentations.
16. Help keep the school attractive, clean, and safe. Please use trash barrels inside and outside the building.
17. Walk into the school and walk at all times inside the school.
18. Items that are deemed inappropriate for a school setting will be taken away.
19. While school/aftercare is in session, children and adults are not permitted to wear head coverings except for religious purposes.

# School Procedures/Policies

It is the belief of the Sharon School Committee and the Administration that the best interests of our students are served whenever teachers and parents work together on behalf of the children. Therefore, it is essential that all attempts to resolve problems be initiated quickly and carefully.

The Sharon School Committee has adopted the following guidelines to be used by parents or the public in order to expedite information giving and/or problem solving:

- (1) Questions and problems concerning individual students must first be addressed to the lead instructor in question.
- (2) If unresolved, these matters and/or problems concerning individual students, departments, or schools should be directed to the Assistant Director of Community Education.

## **Playground Rules**

1. Play in designated areas.
2. No one may leave the playground area without the permission of an adult.
3. On swings, swing back and forth only. No standing, twisting or side-ways movement is permitted on swings.
4. The following activities are considered dangerous and are not allowed on the playground:

Tackle football

Games played with a hard ball

Rock and sand throwing

Throwing snowballs

Pushing, shoving, kicking, wrestling, and rough play

# School Procedures/Policies

## **TOYS**

Children are not allowed to bring toys, electronic devices, iPods/Music players, Trading cards or other fads, or valuable items to school. Too often they are lost, misplaced or traded and are distracting to the learning environment.

## **ELECTRONIC DEVICES**

Electronic devices and equipment, including but not limited to cell phones, music players, smart devices (including smartwatches), video-game systems, CD and/or DVD players, laser pointers, voice or video recorders, portable radios or televisions are not to be turned on, used, or visible during the school day unless written or verbal permission has been granted by the administration. (In emergency situations, violations of this policy will be taken into consideration.)

Students found using any of the aforementioned electronic devices in violation of this policy will be directed to the administration at the school and the device will be confiscated and returned to the student at the end of the day.

The Assistant Director has the right to adapt or modify any consequences on a case by case basis.

It should also be noted that the school/Community Education is not in any way responsible for lost or stolen property; therefore, it is our expectation that students who find items of value, such as electronic devices, return them to the office immediately. Failure to do so will subject a student to the disciplinary consequences associated with being in possession of stolen property.

## **CELL PHONES**

Since cell phones/smart watches are very common, they must be turned off before entering the building. Cell phone use including but not limited to the following are not allowed in school: making/receiving calls, text messaging, emailing, use of social media, taking photographs, and recording video. No form of photography or video recording is permitted on school property, including on school-provided transportation. Owners of cell phones should be cognizant of the legal difficulties that improper use can present.

# WEATHER NEWS

Please make sure that your child is dressed appropriately for the playground.

We follow the Child Care Weather Watch guidelines that suggest we go outside as long as the temperature feels 20° or higher. Please be sure your child has appropriate winter clothing to be able to play safely outside, especially once the snow comes.

This means:

- a winter coat
- a winter hat-NOT a baseball hat
- winter mittens or gloves
- snow pants
- boots



Please make sure your child's name is on all items. You would be surprised how many pairs of black snow pants we get!

If we go outside and there is snow on the ground and your child doesn't have snow pants or boots, they will still go outside, but will need to stay on the hardtop only.

**YOUR CHILD WILL NOT BE ALLOWED TO GO OUTSIDE IF THEY DO NOT HAVE A COAT, HAT AND MITTENS.** Please see attached charts.

In the case of snow, here are some reminders about school closings. If school is closed after care is closed. If school is delayed, before care is delayed by the same amount of time. A one hour delay in school equals a one hour delay at before school. If school is dismissed early, we are at the discretion of the Superintendent. If Dr. Botelho deems it safe to stay open, we will stay with your child until 4:00PM, if Dr. Botelho asks us to close, we will notify and you immediately of the closure.

# Inclement Weather & Closing Information

**School Cancellation:** All Communication Education Programs including Before-School Care, After-School Care, are CANCELED on "SNOW DAYS" and for other system-wide emergencies. There will be NO Community Education Programs when school has been canceled. Because some of our Enrichment Programs are held in locations other than school, Enrichment classes may still be held. Check the Community Education website to find out if class is held. Official school cancellation announcements will be communicated via text, email, and/or phone call to the contact information we have on file.

**Delay of School:** In the event of a school opening delay, Before-School Care will also be delayed. If school is delayed an hour, Before-School Care will open at 8:15AM, if there is a 90 minute delay, the program will open at 8:45AM, a two hour delay the program will open at 9:15AM.

**Community Ed. Cancellation:** During the regular school day, if students are dismissed early from their schools due to a storm, impending storm, or other emergency, there will be After-School Care as soon as the students are released to us until 4:00PM, unless the Superintendent determines that for safety reasons we close at an earlier time.

The background is a light blue gradient with white snowflakes and falling snow particles. The text 'SAVE THE DATE' is centered in a colorful, blocky font. 'SAVE' is on the top line, 'THE' is in the middle, and 'DATE' is on the bottom line. The letters are filled with various colors: yellow, blue, pink, orange, and green.

**SAVE  
THE  
DATE**

**No Aftercare**

**Thursday, March 21**

**This is a staff training day for all  
aftercare employees.**



# EARLY RELEASE DAYS

Early release coverage is available only to students in the Aftercare Program in Sharon Public Schools that are currently enrolled on the designated early release days listed below from their early dismissal time to 6:00PM. Again, students only attend if it is a day they are currently registered for. If the early release day is a day your child normally attends, but will not be coming, contact Bridget Maddalena, [bmaddalena@sharonschools.net](mailto:bmaddalena@sharonschools.net) or 781-784-1574 no later than 10:00AM that day.

We also encourage you to contact your child's school office and classroom teacher to let them know as well. If someone else is picking up your child make sure they are on your authorized pickup list and have them bring an ID with them.

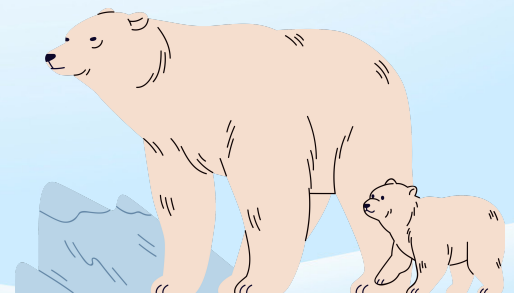
Each school will have a grab and go bagged lunch that students will be provided with. If your child does not want the school grab and go bagged lunch option your child should bring a lunch from home.

## Early Release Days

Thursday, December 14 (ALL)  
Wednesday, January 10 (ALL)  
Tuesday, March 12 (ALL)  
Tuesday, March 19 (ALL)  
Thursday, May 9 (ALL)

## Early Dismissal Times

Middle 11:10AM  
Heights 12:20PM  
Cottage 12:30PM  
East 12:35PM



# KAYMBU

This is a great way to see what the aftercare students are doing. They often contain captions that explain projects and activities. Kaymbu is a visual newsletter that is fun to look at with your children. This becomes a wonderful opportunity for parents to reflect and family members to reflect on all the wonderful activities the students have engaged in while in our program throughout the week.

The staff does try to make sure every child on the approved list is photographed, but their main goal is to document activities for you with pictures. Children who attend every day tend to be in more photos, so please do not be offended if you do not see a lot of pictures of your child. Our staff is busy and does their best!

The Kaymbu app sends one email to each family whose email we have listed in our system. Feel free to forward it to other family members. The individual photos can be downloaded as well for convenience. If for some reason you do not receive the email, check your spam folder and then email [emccabe@sharonschools.net](mailto:emccabe@sharonschools.net) notifying that you did not receive it. This will only get sent out to families who have selected their child to be photographed. If your child is on the "**No Photo**" list, your child will not be photographed and you will not receive the weekly emails.





# POP TAB WARS

Back by popular demand are the Pop Tab Wars. All programs will be collecting Pop Tabs up until May 24, 2024 to benefit Ronald McDonald House Charities. Students who would like to participate will receive a large zip loc bag to be filled and return back to the program for deposit. There will also be a bin at the sign-out desks to deposit any loose tabs.

Tabs will be collected at the end of each week and weighed. Last year's winners were Heights, who brought in 92.2lbs of tabs, followed by Cottage with 34.6lbs and East with 20.8lbs. Donations will be delivered to the Ronald McDonald House in Providence, RI.

Tab donations help families physically, economically, and emotionally during their health care journey. A Ronald McDonald House program helps reduce stress and financial burden for families when they must travel far from home to access medical care for their child.

Each tab goes a long way!

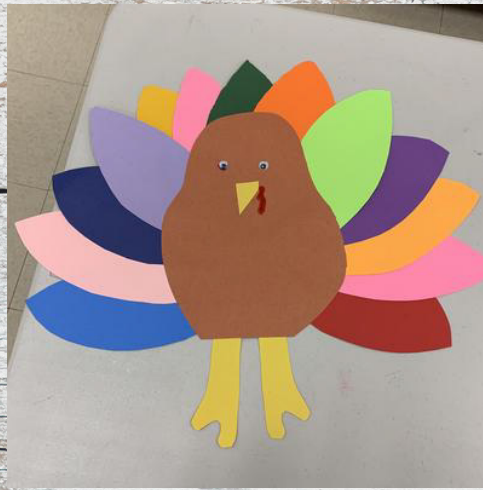


## Pop Tab Fun Facts:

- It takes 1,280 pop tabs to make one pound.
- RMHC receives approximately 70 cents per pound.
- It would be take about 63,360 pop tabs place end-to-end to reach a mile.



# THANKSGIVING PICTURES



# THANKSGIVING PICTURES



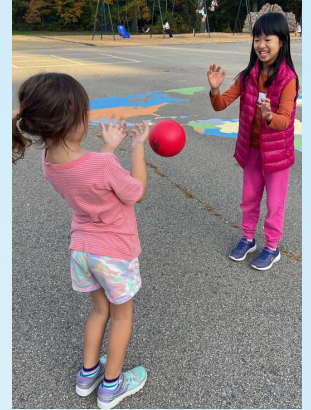
# PROGRAM PICTURES



# PROGRAM PICTURES



# PROGRAM PICTURES





# ENRICHMENT



**Sharon Community Education  
Enrichment Term 2, 2023-2024  
Grades K-5**



[SharonCommunityEducation.com](http://SharonCommunityEducation.com)



- Business Sharks, Grades 2-5**
- Dungeons & Dragons, Grades 2-5**
- Ice Skating, Grades K-5**
- Kumon Session I: Math, Grades 1-5**
- Kumon Session II: Math & Reading, Grades 1-5**
- LEGO Challenges, Grades 2-5**
- LEGO Future House, Grades 2-5**
- NASA, Grades 2-5**
- Public Speaking, Grades 2-5**
- Tennis Session I & II, Grades 1-5**
- The Joy of Yoga, Grades K-2 & 3-5**
- Theatre, Grades 3-5**
- Web Design, Grades 3-5 & 6-8**



# Looking for Summer Work? We're hiring for our Summer Camps!

**STAR Camp**  
**6/24/24 to 8/2/24**  
**Seeking counselors &  
specialists**



**CREATE Camp**  
**7/8/24 to 8/2/24**  
**Seeking staff with  
performance background**

**Both camps are held at  
Sharon High School. Scan  
the barcode to apply!**



**You can also visit:**

**[www.sharoncommunityeducation.com/employment-application](http://www.sharoncommunityeducation.com/employment-application)**

# Who To Know At the Office & Program



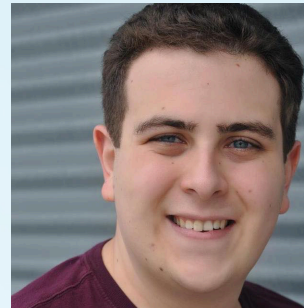
Erin McCabe  
Assistant Director of  
Community Ed. Enrichment  
Coordinator and Director of  
STAR Camp  
emccabe@sharonschools.net  
781-784-1574 x1



Maryanne Auld, RN  
Lead Instructor at East  
781-793-5199



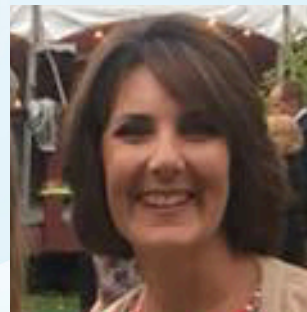
Barbara Coyne  
Office Manager  
bcoyne@sharonschools.net  
781-784-1574 x3



Alex Narcotta  
Lead Instructor at Heights  
781-793-9999



Bridget Maddalena  
Before & Aftercare  
bmaddalena@sharonschools.net  
781-784-1574 x2



Kim Moore  
Lead Instructor at  
Cottage  
781-784-1519



Sara Norton  
Adult Education  
snorton1@sharonschools.net  
781-784-1574 x5



Molly Van Cott  
Lauren Cohen  
Suma Kaveti  
Vanithamnani Rajkumar  
781-793-5074

