

AFTERCARE FEBRUARY NEWSLETTER



February is a pleasant and happy month. With only 28 or 29 days, February, the second month of the year, is renowned for being the shortest.

This morning, we opened up registration for STAR/CREATE Camp, and the response has been fantastic - we're filling up fast! Don't worry if your child is currently on the waitlist; more opportunities may become available.

Keep in mind that Registration for the 2025/2026 Before and After Care opens on Wednesday, February 12th at 9:00 AM. Ensure that your account with us is up to date to secure your spot.

Enjoy the exciting activities and programs February has in store for you!

Sincerely,

Erin McCabe
Assistant Director
emccabe@sharonschools.net



WEATHER NEWS

We follow the Child Care Weather Watch guidelines that suggest we go outside as long as the temperature feels 20° or higher. Please be sure your child has appropriate winter clothing to be able to play safely outside, especially once the snow comes.

This means:

- a winter coat
- a winter hat-NOT a baseball hat
- winter mittens or gloves
- snow pants
- boots

Please make sure your child's name is on all items. You would be surprised how many pairs of black snow pants we get!

If we go outside and there is snow on the ground and your child doesn't have snow pants or boots, they will still go outside, but will need to stay on the hardtop only. **YOUR CHILD WILL NOT BE ALLOWED TO GO OUTSIDE IF THEY DO NOT HAVE A COAT, HAT AND MITTENS.** Please see attached charts.

In the case of snow, here are some reminders about school closings. If school is closed after care is closed. If school is delayed, before care is delayed by the same amount of time. A one hour delay in school equals a one hour delay at before school. If school is dismissed early, we are at the discretion of the Superintendent. If Dr. Botelho deems it safe to stay open, we will stay with your child until 4:00PM, if Dr. Botelho asks us to close, we will notify and you immediately of the closure.



Inclement Weather & Closing Information

School Cancellation: All Communication Education Programs including Before-School Care, After-School Care, are **CANCELED** on "SNOW DAYS" and for other system-wide emergencies. There will be **NO** Community Education Programs when school has been canceled. Because some of our Enrichment Programs are held in locations other than school, Enrichment classes may still be held. Check the Community Education website to find out if class is held. Official school cancellation announcements will be communicated via text, email, and/or phone call to the contact information we have on file.

Delay of School: In the event of a school opening delay, Before-School Care will also be delayed. If school is delayed an hour, Before-School Care will open at 8:15AM, if there is a 90 minute delay, the program will open at 8:45AM, a two hour delay the program will open at 9:15AM.

Community Ed. Cancellation: During the regular school day, if students are dismissed early from their schools due to a storm, impending storm, or other emergency, there **will be** After-School Care as soon as the students are released to us until 4:00PM, **unless** the Superintendent determines that for safety reasons we close at an earlier time.



PROGRAM NEWS

If you need to change your child's dismissal routine (e.g. change from taking the bus to getting picked up, dismiss early for an appointment, etc.), you must email/send in a note to the school office, classroom teacher, Community Education. We recognize that much of our world now communicates digitally, and it's tempting and logical that you would like to email your child's teacher. However, we run into issues when either the teacher is out that day and unable to alert the school office, or if the email comes in during class instruction time. The teacher is usually unable to pass along the message to the appropriate parties. Also, the school office does not communicate to our office when your child is out from aftercare or is going home a different way. With all of that in mind, please send in a hard copy dismissal note to the classroom teacher and email school office as well as emailing the Community Ed. Office at communityedabsences@sharonschools.net before 2:00PM.

We want to thank you for your patience with the Before and Aftercare waitlist. Please know that we at Community Education are continuing to do our best to be able to accommodate as many children as we safely can into our programs with the amount of staff we have. We will contact families individually via email should space become available. If you need to make any changes to your child's schedule we will need it in writing. All changes can be sent to bmaddalena@sharonschools.net

On the Early Release days, it is important that your child has a lunch from home or it is communicated to them that they are getting a bagged lunch from school. Aftercare does not provide lunches.

REMINDERS

February 17-21 - February Break

March 20- Early Release (ALL) NO AFTERCARE

March 25- Early Release (ALL)

March 31- Early Release (ALL) NO AFTERCARE

April 18-25 - April Break

May 7- Early Release (ALL)

May 26- Memorial Day

June 19- Juneteenth



Mark Your Calendars!
BEFORE & AFTER CARE

REGISTRATION FOR THE 2025/26 SCHOOL YEAR

OPENS:

February 12, 2025
at 9AM

REGISTER ONLINE

REGISTER

sharoncommunityeducation.com

EveryKid Dance

An Adaptive Dance and Drum Class



EveryKid Dance is an adaptive dance and music program for kids aged 3-8. Based on the Boston Ballet's Adaptive Dance curriculum, this is not your typical dance class, emphasizing creative movement, drumming and FUN!

Combining many styles of movement, from African dance to yoga, along with opportunities to create music, EveryKid Dance is designed so that children of all abilities can experience the joy and develop a love of dance, music and the arts as well as achieve personal, social and physical growth in a compassionate and supportive environment.

Meet the Instructors
Kim Newton—Boston Ballet
Adaptive Dance trained Dance
Instructor
James Newton - Rhythm Maker
Extraordinaire

6 Week Session Starts March 7th

6:30-7:30 pm

At Sharon Community Education

181 Pond Street, Sharon MA

Registration \$60 for 6 weeks

Email: everykiddance@gmail.com



After Care Schedule for 2024/2025 Early Release Days

March 20, 2025 NO After Care/Lounge (staff professional development)

March 25, 2025 school dismissal until 6:00

March 31, 2025 NO After Care/Lounge (Eid)

May 7, 2025 school dismissal until 6:00



EARLY RELEASE DAYS

Early release coverage is available only to students in the Aftercare Program in Sharon Public Schools that are currently enrolled on the designated early release days listed below from their early dismissal time to 6:00PM. Again, students only attend if it is a day they are currently registered for. If the early release day is a day your child normally attends, but will not be coming, **contact the Community Ed. Office at communityedabsences@sharonschools.net or 781-784-1574 no later than 10:00AM that day.**

We also encourage you to contact your child's school office and classroom teacher to let them know as well. If someone else is picking up your child make sure they are on your authorized pickup list and have them bring an ID with them.

Each school will have a grab and go bagged lunch that students will be provided with. If your child does not want the school grab and go bagged lunch option your child should bring a lunch from home.

Early Dismissal Times

Middle 11:10AM
Heights 12:20PM
Cottage 12:30PM
East 12:35PM

KAYMBU

This is a great way to see what the aftercare students are doing, and they often contain captions that explain projects and activities. Kaymbu is a visual newsletter and it is fun to look at them with your children. This becomes a wonderful opportunity for parents to reflect and family members to reflect on all the wonderful activities the students have engaged in while in our program throughout the week. The staff does try to make sure every child on the approved list is photographed, but their main goal is to document activities for you with pictures. Children who attend every day tend to be in more photos, so please do not be offended if you do not see a lot of pictures of your child. Our staff is busy and does their best!

The Kaymbu app sends one email to each family whose email we have listed in our system and you can feel free to forward it to other family members. The individual photos can be downloaded as well for your convenience. If for some reason you do not receive the email, check your junk mail and then let me know if you do not have it. This will only get sent out to families who have selected their child to be photographed. If your child is on the **"No Photo"** list you will not receive the emails and your child will not be photographed.



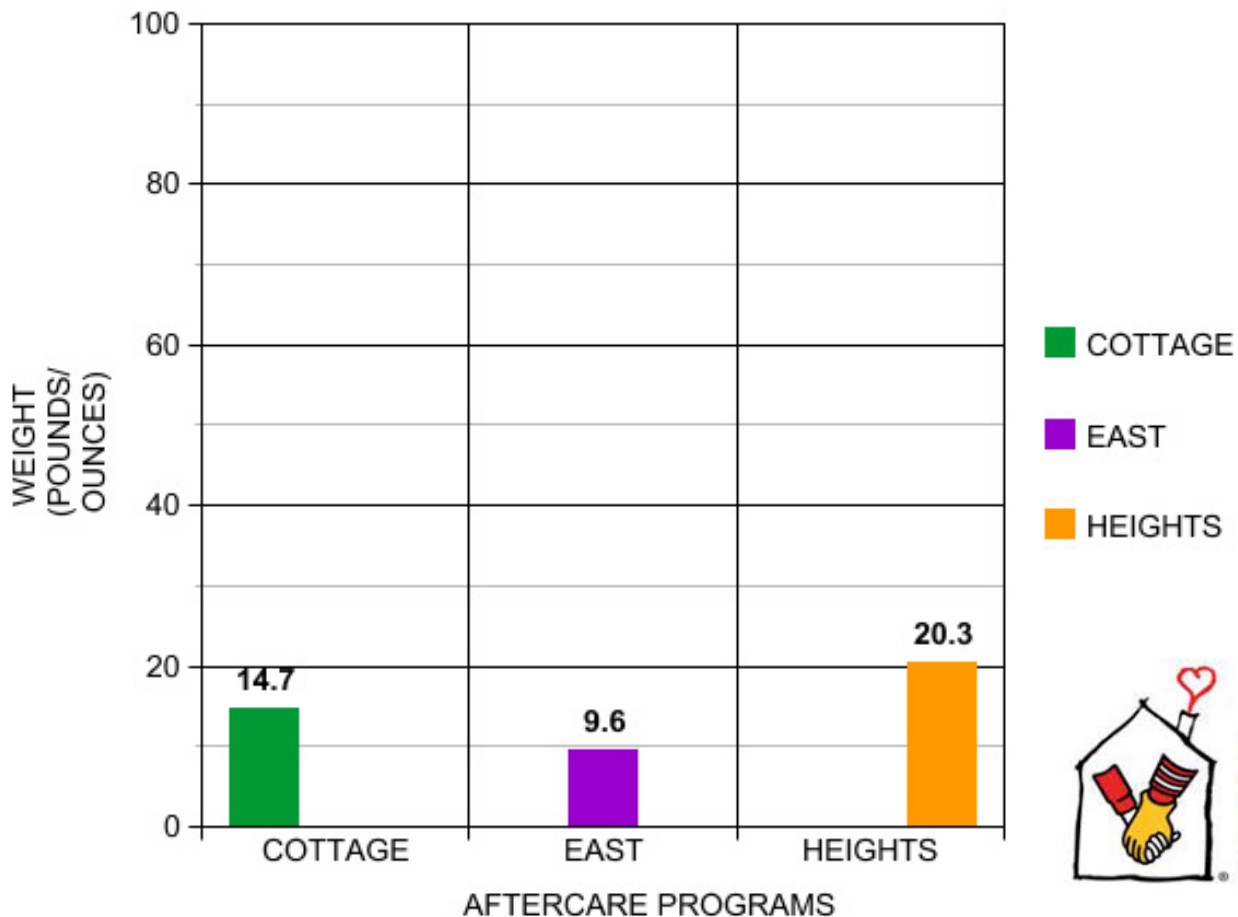
POP TAB WARS

Back by popular demand are the Pop Tab Wars. Beginning **Monday, November 4, 2024-Friday, May 23, 2025** all programs will be collecting Pop Tabs to benefit Ronald McDonald House Charities. Students who would like to participate will receive a large zip loc bag to be filled and return back to the program for deposit. There will also be a bin at the sign-out desks to deposit any loose tabs.

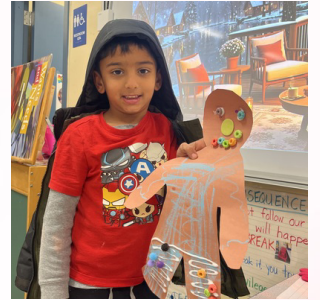
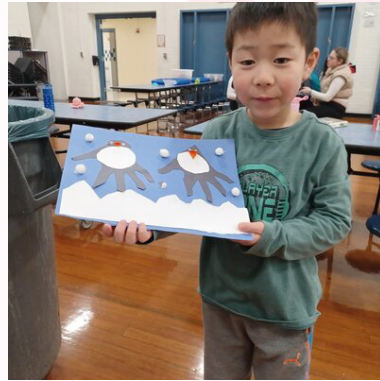
Tabs will be collected at the end of each week and weighed. Last year's winners were Heights who brought in 47.9lbs of tabs, followed by Cottage with 43.9lbs and East with 9.8lbs. Donations will be delivered to the Ronald McDonald House in Providence, RI.

Tab donations help families physically, economically, and emotionally during their health care journey. A Ronald McDonald House program helps reduce stress and financial burden for families when they must travel far from home to access medical care for their child. Each tab goes a long way!

2024-2025 POP TAB WARS



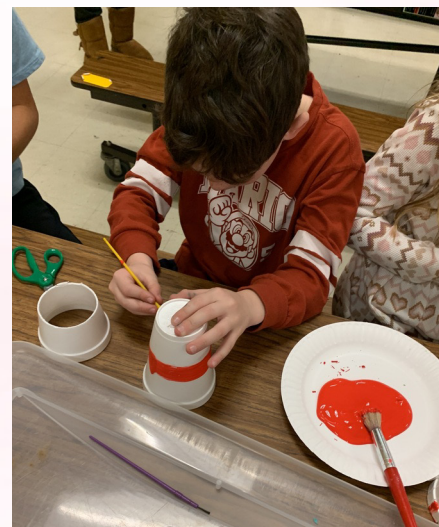
Winter Pictures



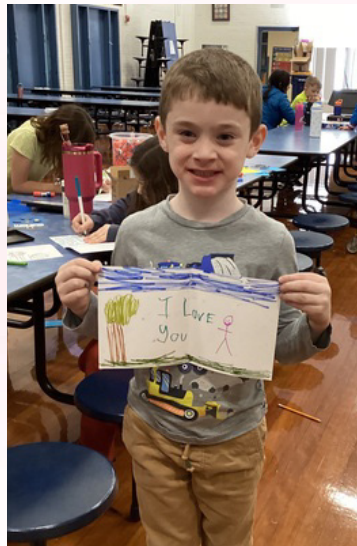
Winter Pictures



Winter Pictures



CLUBS



CLUBS



CLUBS



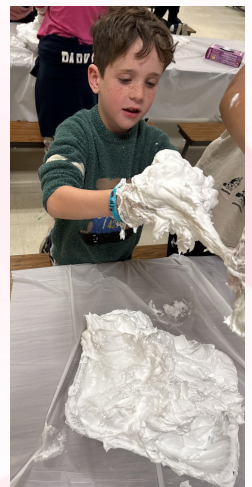
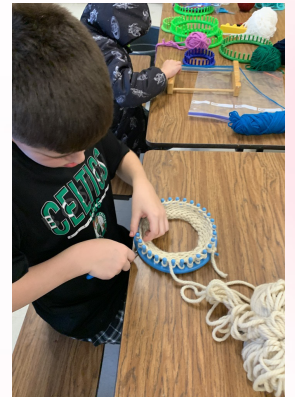
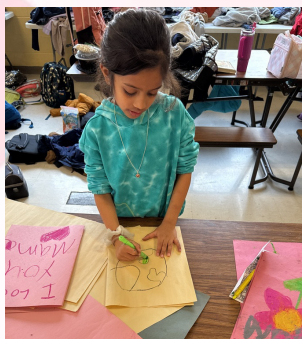
PROGRAM PICTURES



PROGRAM PICTURES



PROGRAM PICTURES



Who To Know At the Office & Program



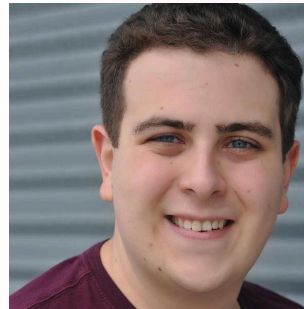
Erin McCabe
Assistant Director of
Community Ed. Enrichment
Coordinator and Director of
STAR Camp
emccabe@sharonschools.net
781-784-1574 x1



Maryanne Auld, RN
Lead Instructor at East
781-793-5199



Barbara Coyne
Office Manager
bcoyne@sharonschools.net
781-784-1574 x3



Alex Narcotta
Lead Instructor at Heights
781-793-9999



Bridget Maddalena
Before & Aftercare
bmaddalena@sharonschools.net
781-784-1574 x2



Kim Moore
Lead Instructor at Cottage
781-784-1519



Sara Norton
Adult Education
snorton1@sharonschools.net
781-784-1574 x5



Suma Kaveti
Vanithamnani Rajkumar
781-793-5074